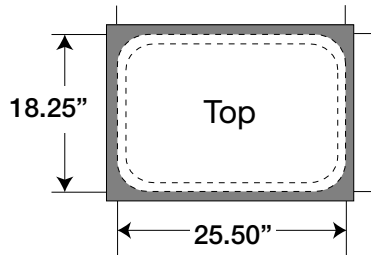


RollOne Sock Counter

Counter Configuration

Graphic Dye Sub Sock Top



Minimum Document Size* (with Bleed)

Width: 27.50" x Height: 20.25"

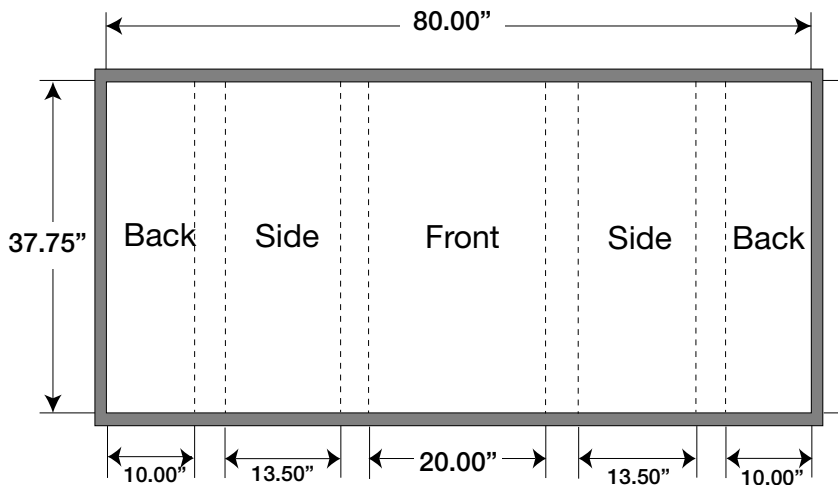
(50% with Bleed)
 Width: 13.75" x Height: 10.125"

(25% with Bleed)
 Width: 6.875" x Height: 5.0625"

Finished Size

Width: 25.50" x Height: 18.25"

Graphic Dye Sub Sock Body



Minimum Document Size* (with Bleed)

Width: 82.00" x Height: 39.75"

(50% with Bleed)
 Width: 41.00" x Height: 19.875"

(25% with Bleed)
 Width: 20.50" x Height: 9.9375"

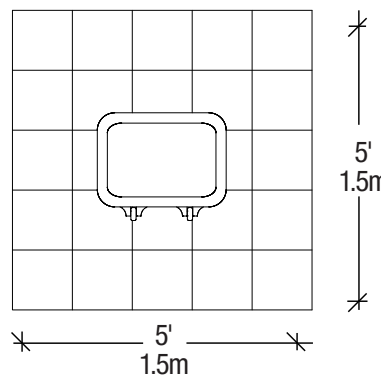
Finished Size

Width: 80.00" x Height: 37.75"

Live Front Size

Width: 20.00" x Height: 37.75"

FLOOR PLAN



ELEVATION



Note: Top of sock will be black unless otherwise specified.